



Lutheran  
Women  
in Mission

# Women of the Word

Special Convention Issue • January 1, 2022



**TREASURED!**  
39<sup>TH</sup> BIENNIAL CONVENTION

**JUNE 3–5, 2022**  
**TEMPE, ARIZONA**

EMBASSY SUITES  
4400 S. RURAL RD.  
TEMPE, AZ 85282

Find convention  
information and  
registration  
materials  
at [psdlwml.org](https://psdlwml.org) or  
by contacting your  
zone president.

*The kingdom of heaven is like treasure hidden in a field, which a man found and covered up. Then in his joy he goes and sells all that he has and buys that field. Again, the kingdom of heaven is like a merchant in search of fine pearls, who, on finding one pearl of great value, went and sold all that he had and bought it (Matthew 13:44–46 ESV).*



## PSD LWML President, Nila Rodriguez

We are so excited to invite you to the 39th biennial LWML Convention for the Pacific Southwest District in Tempe, Arizona, June 3-5, 2022. After canceling the in-person convention planned in Palm Springs in 2020, we really cannot wait to gather the LWML family in Tempe.

The LWML family is full of love, encouragement, and Christian values while we support missions throughout our district and, through the 25% of our

Mite Offerings that go to national LWML, throughout the world. The efforts to support missions can be invigorated by gathering like this to study God's Word, pray, and celebrate all the wonderful service being done to God's glory.

Our 2022 convention theme is "Treasured!" and the mission statement is "Treasured by God's Embrace". Our goals for the convention are that all those attending:

- Be assured that you are a treasure to our Lord,
- Be affirmed in His love for you and
- Be encouraged to take His love into the world.

The Host Committee is co-chaired by Kathy Baumhofer from Epiphany Lutheran in Chandler and Amy Gill from Holy Cross Lutheran in Scottsdale; they have been great leaders of a very energized committee which has produced wonderful ideas to make all attendees feel "Treasured by God's Embrace."

You will see more specifics throughout this special edition of the *WOW*. For one thing, we have great speakers planned — our District President, Rev. Dr. Mike Gibson; the hilarious Jan Struck as our keynote speaker (and a few other things!); and the renowned author and presenter, Donna Snow, as our Bible Study leader. And that is just to name a few! We have so much planned for you in an excellent location.

I encourage you to start planning to attend this LWML family reunion. Maybe a fundraiser for your group will help you and your LWML sisters defray the cost. We want you there where we will rekindle our relationships with each other, strengthen our faith, and as Lutheran Women in Mission, strengthen our determination to take God's love into our communities and throughout the world through our missions.

Nila Rodriguez  
PSD LWML District President (2020–2024)

## Friday Afternoon Pre-convention Interest Sessions

You will want to arrive early to participate in the pre-convention interest sessions beginning at 1pm on Friday, June 3!

Speakers include LWML Mission Grant recipients Pastor Anthony DiLiberto (missionary in Peru) and Kay Siebert (Christ Cares Ministries in Phoenix) reporting on how LWML mission grants have mightily supported their ministries. Kay will also lead a second interest session on “self-care” and how that helps strengthen us to serve others.

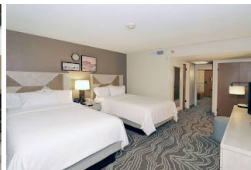
Connie Phillips of Lutheran Social Services of the Southwest will lead a session on their work with the many refugees that have been relocated in our area.

Heart to Heart (H2H) Sisters, Melissa Salomón and Angelina Jauregui will lead two interest sessions: one that will share the purpose and goals of the H2H Sisters program with all the women of the PSD, and a second session for women participating in the H2H program at convention.

Donna Snow, our convention Bible Study Leader, will give a sneak peek to her latest Bible study to be released in 2023, and Jan Struck, our Keynote Speaker, will lead a session about what it means to be treasured by our Creator.

Those with questions regarding leaving a lasting impact for their church and family when they are called to Heaven, are encouraged to sign up for the Gifts of Love session led by Linda Gage.

Register early on the Pre-convention Interest Sessions Registration Form. Space is limited and will be filled on a first-come, first-served basis.



## A Suite Deal!

The convention team and site manager were very impressed with the staff and facilities at the Embassy Suites in Tempe. Not only is the hotel easily accessible to those driving or flying into town, the rate that they gave us for our event is very affordable.

All suites include a bedroom with two **double** beds and a separate sitting area with sofa bed. Consider when planning on rooming with friends that the beds are double and not queen size.

Another perk is that the hotel offers a complimentary, made-to-order breakfast every morning and a light wine and beer reception in the evenings. And it has a pool!

You will find all the information you need to reserve your room on the Convention Hotel Reservation Instructions in the registration packet.



## CONVENTION meals AND deals



We are excited to offer a special 3-Meal Package with a savings of \$10 on the registration form. The meals included in this package are Friday Dinner, Saturday Lunch, and the Banquet on Saturday evening. The hotel provides a complimentary breakfast, so together with purchase of the 3-Meal Package, all your meals should be covered during the duration of the Convention. Convention meals are subject to availability after May 1, 2022.

## Speaking of the Saturday Banquet...

It's going to be a treasure trove of fun! The food will be excellent, the conversations will be terrific, and the entertainment ... will be hilarious! Our very special Keynote Speaker, Jan Struck, will also entertain us with “Pearls of Wisdom from an LWML Member Extraordinaire”! Guests are encouraged to wear pearls and gold in keeping with the theme! You won't want to miss the fun!

## Men's Breakfast!



On Saturday morning at 7am, Rev. Tim Jenks and Host Convention Committee Counselor Rev. David Poedel will host a breakfast for all men attending the convention, enabling them to meet with like-minded men who support the mission of LWML. If you are a guest at the hotel, breakfast is included in your registration. If you are not a hotel guest, you may purchase your breakfast.



## Share the LWML Treasure!

### Heart to Heart (H2H) Sisters

Our district has many women from multicultural backgrounds and the H2H Sisters Program is designed to encourage and include them in the mission of LWML.

### Young Woman Representatives (YWR)

Young women are encouraged to attend the convention together so they can learn about the heart and mission of LWML while they connect with women in a similar season of life.

Consider “adopting” a H2H Sister or a YWR in your congregation. Share with her your LWML experience and encourage her to attend the convention with you. Help her access the application and scholarship forms online. Perhaps your society or zone could take up a collection to help with some of her expenses. The woman you encourage may be one of the next leaders of LWML tomorrow!

H2H and YWR applications can be found at [psdlwml.org](http://psdlwml.org). They are also eligible to apply for the general scholarship.

## Special Scholarships

LWML PSD is offering scholarships for those interested in attending the convention. Scholarships will cover the registration fee (\$150) and a 3-meal package (\$125). Scholarships do not cover the hotel room or additional meals. Scholarship forms can be found on the PSD website: [psdlwml.org](http://psdlwml.org).

### Pastors' Scholarships

Because we truly treasure our pastors, a special scholarship has been set up to include one pastor from each congregation in our district. Please encourage your pastor to attend, worship and learn with joyful, service-minded men and women, and familiarize themselves with LWML and our amazing Mission Grants!

To open up pastors' schedules to be able to attend the entire convention, District LWML Pastoral Counselor Tim Jenks has prepared a written message for use by a lay person for Sunday morning worship.

### General Scholarships

General scholarships are for anyone who wishes to attend the convention and has a desire to share LWML with others. Consider encouraging a young woman, a Heart to Heart Sister, or your pastor's wife to apply!



## Opening Worship Service

For many, a meaningful highlight of their convention experience, the opening worship service will begin at 7:30pm on Friday evening. You do not need to be registered for the convention to attend this special service. We are blessed to have Rev. Dr. Michael Gibson, Pacific Southwest District LCMS President, as the proclaimer for the service. The evening's offering will be designated to support Cross-Cultural Mini Grants.

## Convention Personalities

It's difficult to be involved in LWML and not know the names Donna Snow and Jan Struck. These two gems have been involved in LWML at district and national events for many years.



Donna Snow (formerly Donna Pyle) has been writing and leading Bible studies since 2007. Her witty, Texas

charm and spirit-filled insights encourage women of all ages to wholeheartedly love, serve, and live for Jesus Christ.



Jan Struck masterfully captures the heart of LWML and allows us to laugh at ourselves and our Lutheran traditions. Her humorous interruptions are a

highlight at many national conventions. She will encourage us through the keynote address and have us laughing at the Saturday Evening Banquet!





## Gifts from the Heart

Continuing the tradition of opening our hearts to others, we encourage you to bring your Gifts From the Heart to convention. Recipients of our gifts will be Lutheran Social Services of the Southwest ([lss-sw.org](http://lss-sw.org)) and Sunshine Acres Children's Home ([sunshineacres.org](http://sunshineacres.org)). Learn more about these amazing ministries and share the Gifts from the Heart convention flyer with your community.

### Gift Cards (\$10 or \$20):

- Target or WalMart
- Please mark the dollar amount on the card in permanent marker

### Hygiene Items:

- shampoo
- conditioner
- body wash
- liquid soap
- sun block
- feminine products (pads & tampons)



## National Representative, Karen Morrison

Karen Morrison, LMWL Vice President of Gospel Outreach, will attend our convention, share greetings from LWML President, Debbie Larson, and give us an update on the exciting plans and initiatives coming our way!

Karen has lived in Kansas, her whole life but retirement found her and her husband, John, spending the winter months in Arizona and traveling in an RV during the summer. Since Apache Junction, Arizona, is now their home base, Karen has become more active in the

Mountain View Lutheran Church LWML group and looks forward to more opportunities to work with the ladies in the LWML Pacific Southwest District.

Karen's life verse comes from Mark 5:36 *Do not fear, only believe*, from the story of Jairus and his daughter. Karen tries to be a reflection of God's love, hope, and promise. She does her best to pray with those she knows are in need, at the time, and not just with a promise to do so later.

Karen chose verses from 1 Peter to guide her as she serves as Vice President of Gospel Outreach. *As each has received a gift, use it to serve one another, — whoever serves, as one who serves by the strength that God supplies—in order that in everything God may be glorified through Jesus Christ* (1 Peter 4:10a, 11a).

## Mission Treasure Walk

Raise money toward our mission goal and stroll the grounds of the Embassy Suites with fellow sisters and brothers in Christ!

The mission walk will take place on Saturday morning at 6:30am right on the grounds of the Embassy Suites.

There is an \$11 fee which includes a special Mission Walk t-shirt that affirms to others that they are treasured and opens up opportunities for you to share the gospel of God's love with them.

Sign up on the Convention Registration Form and on the Mission Walk Registration Form.

***If you do not intend to participate in the Mission Walk, you may still order a shirt on the convention registration form. They would make a great gift!***



## Credential Essentials

Each local society is entitled to two voting delegates at the convention.

Credential forms can be found on the PSD website: [psdlwml.org](http://psdlwml.org) or by contacting Anna Baker, at [presidentassistant@psdlwml.org](mailto:presidentassistant@psdlwml.org).

Each delegate will be provided voting information and should plan to attend the Delegate Session Friday afternoon at 4pm.



## Convention Pin

The convention pin is uniquely designed to remind us that God lovingly treasures each one of us. Purchase a pin on the Convention Registration Form for just \$7 and receive it when you arrive at the hotel.