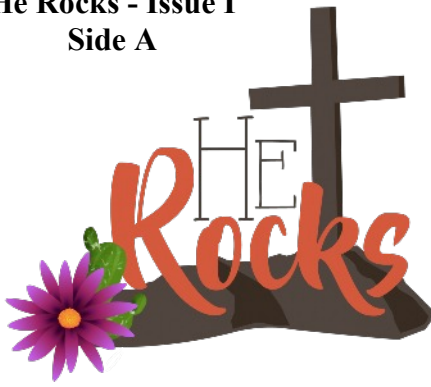


THE CORNERSTONE



Publication of the LWML of the Pacific
Southwest District Convention
June 8-10, 2018 SouthPoint Hotel,
Las Vegas, NV



Welcome to Las Vegas and our 37th Biennial Convention! It is so exciting to welcome you to our town and come together in the desert to worship our Lord and Savior, study His Word, sing His praises, greet old friends, make new friends, and conduct the business of the Lutheran Women in Mission!

Now we are frequently known for the saying “What happens in Vegas, stays in Vegas”. However, I want you to know that this is not true for the women of LWML! What happens in Vegas in this Convention does not stay in Vegas! When your visit to our city is complete, you need to spread the word of God’s love, tell everyone the mission of the LWML and encourage them to join us in this great ministry. Spread the word, joy, enthusiasm, and the blessings of drinking from the Rock – our Rock is Christ! It time to Engage, Encourage, Equip and Enjoy! So, let’s get ready to Rock!

President Bonnie

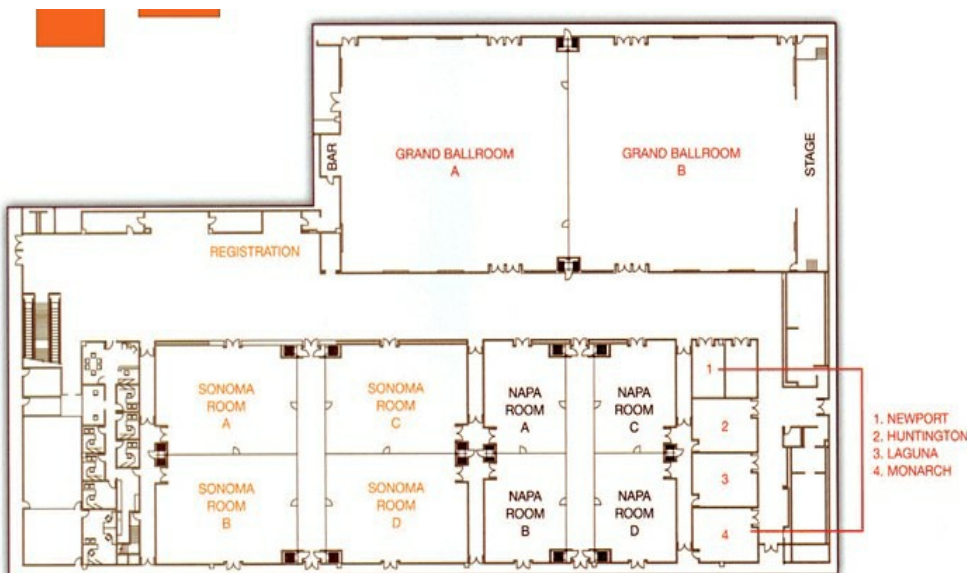


During the convention we will have a prayer room. The prayer room is a quiet, peaceful location for you to pray and reflect. It will be open throughout the day and evening. At times, there will be an attendant available. You may ask the attendant to pray with you; you may ask others present to pray with you; or you may choose to be solitary and take the time to recharge and refresh alone. The prayer room is available for your use and you are welcome to take a break and relax for a moment or for a few minutes in prayer and reflection. -

Chenette Cole, VP Christian Life .

WHERE DO I FIND?

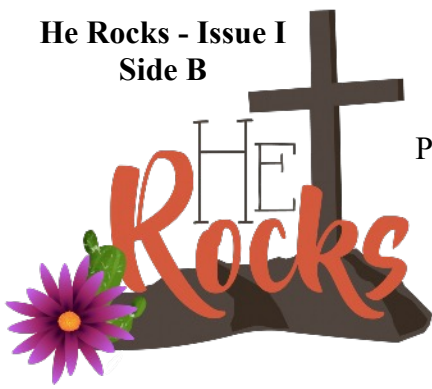
Please use the map below and the guide to the right to help find your way around the convention! And please remember, you can always ask one of our friendly Hospitality Ladies!! They’re the ones with the Purple Bandanas and they LOVE questions!!



Activity	Location
Registration	Registration
Mission Walk Registration	Registration
Hospitality	Registration & People with Purple Bandanas
CPH & LWML Store	Napa C
Prayer Room	Huntington
Historian Display	Napa C
Mission Grants	Napa D
Exhibits	Napa D
Meals	Ballroom B
Worship & Convention	Ballroom A
Silent Auction	Napa A and B
Talent Show	Ballroom A
Message Board	Registration

THE CORNERSTONE

Publication of the LWML of the Pacific SW District Convention
June 8-10, 2018 SouthPoint Hotel, Las Vegas, NV



Definition of Cornerstone

1. an important quality or feature on which a particular thing depends or is based. *We depend on Jesus!*
 2. a stone that forms the base of a corner of a building, joining two walls. *Joined together in Christ!*
- Jesus is our Cornerstone! He is our Rock!**



Your LWML Board of Communications is hosting a **SCAVENGER HUNT!!** Pick up your

CLUE SHEET in the Exhibit Area tomorrow (Saturday, June 9). That's your first clue!! Don't worry about having to carry items around either! We're just asking you to locate the items listed and write down where you find them. Place your completed entries in the container located in the Exhibit Room. The winner will be announced on Sunday at the final Business Meeting! Have fun!



WE WANT YOU! Please consider sharing your talent with your sisters & brothers in Christ as we enjoy "LWML's Got Talent" on Saturday evening at 8 pm in Ballroom B. Sign-up sheets are available at Registration. If you have any questions - see Lynda Viken (or leave a message on the message board by registration). See you then!

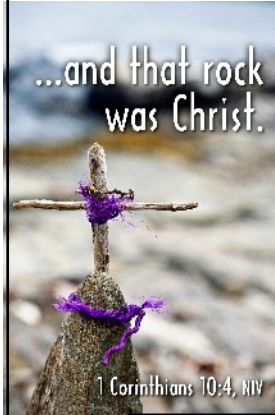


Napa C is your spot to check out the awesome Archivist Historian Exhibit as well as the Concordia Publishing House and LWML Stores. Check out special pricing! Both are open all day today and tomorrow before, after and in between convention sessions. !

Tonight's Worship Service will be held in Ballroom B. Please join us for worship, praise, singing, God's Word and Holy Communion. What a privilege it is to begin our Mountain-Top Weekend with this amazing opportunity. Rev. Dr. Larry Stoterau will be sharing God's Word with us in his final LWML Convention as our Pacific Southwest District President. Pastors will begin



robing in the Properties Room (by Registration) at 6:45



The Mission Walk will be held in the climate-controlled comfort of our Ballrooms! Please join us Saturday at 7 AM! Information & T-shirts can be picked up at registration today!



Convention Ingathering. The ingathering is supporting the Women's Resource Medical Centers of Southern Nevada. This organization exists to save the lives of unborn children by sharing the love of Jesus Christ through spiritual, physical, emotional, and educational support to their clients. We are gathering Walmart or Target gift cards that will be used to purchase items



to be given to changed mind moms and/or moms who have no support. There is a diaper bag in the registration area for your donations. If you did not bring gift cards, you can still support this project by making a cash (no checks, please) donation. Please make your donations before noon on Saturday. The gifts will be dedicated on Sunday morning. Thank you for all your support!



Napa D is where you will find displays on this year's Mission Grant and Multi-Cultural Mission Grant nominees.

This is also the spot to check out the wonderful vendors who are set up in our Exhibit area. Please pick up your Exhibit Bingo Card in the Exhibit area. Get signatures from the vendors. All entries with Black outs will be entered into a prize drawing (to be announced on Sunday!)